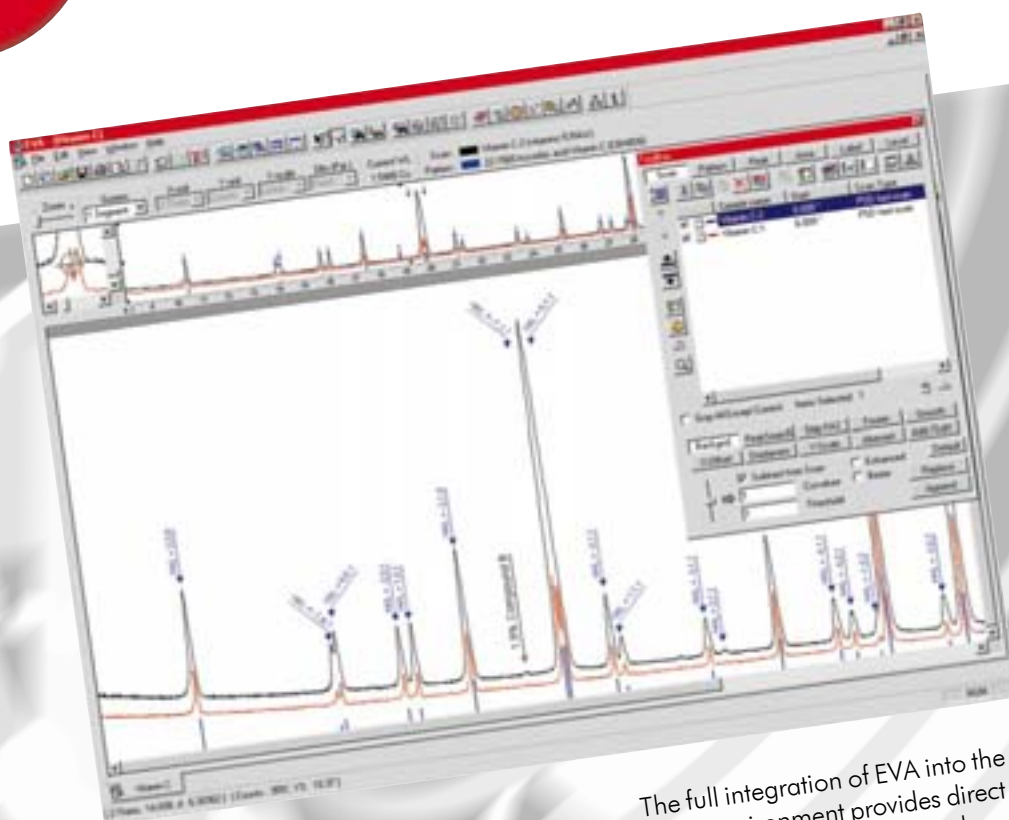


NEW!
Version 7

POINT, CLICK AND ANALYSE YOUR XRD DATA – DIFFRAC^{plus} EVA



Convenient data evaluation – professional presentation of results

DIFFRAC^{plus} EVA is the latest standard for XRD data evaluation and presentation. EVA is part of the DIFFRAC^{plus} BASIC package.

EVA is a comprehensive and extremely versatile graphics program for easy, fast and convenient 2- and 3- dimensional data evaluation and presentation. Accurate analytical results are guaranteed due to many new and improved evaluation algorithms.

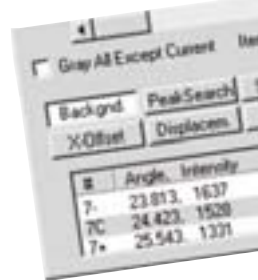
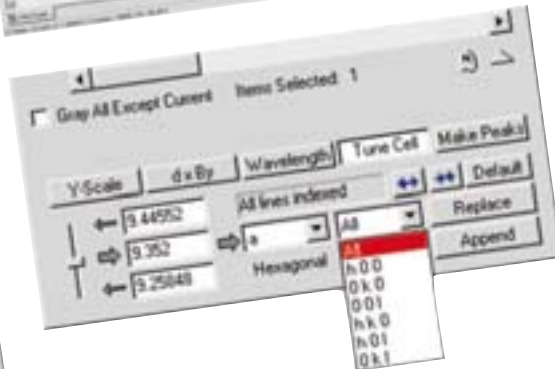
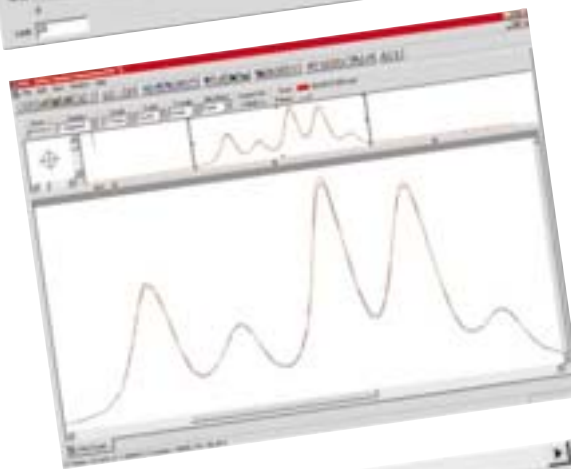
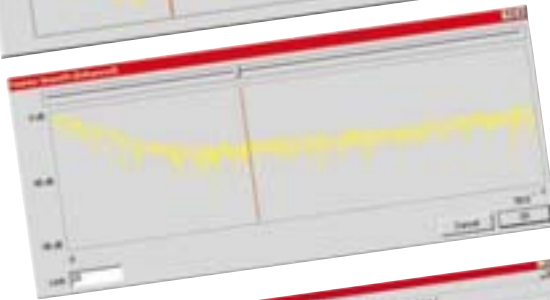
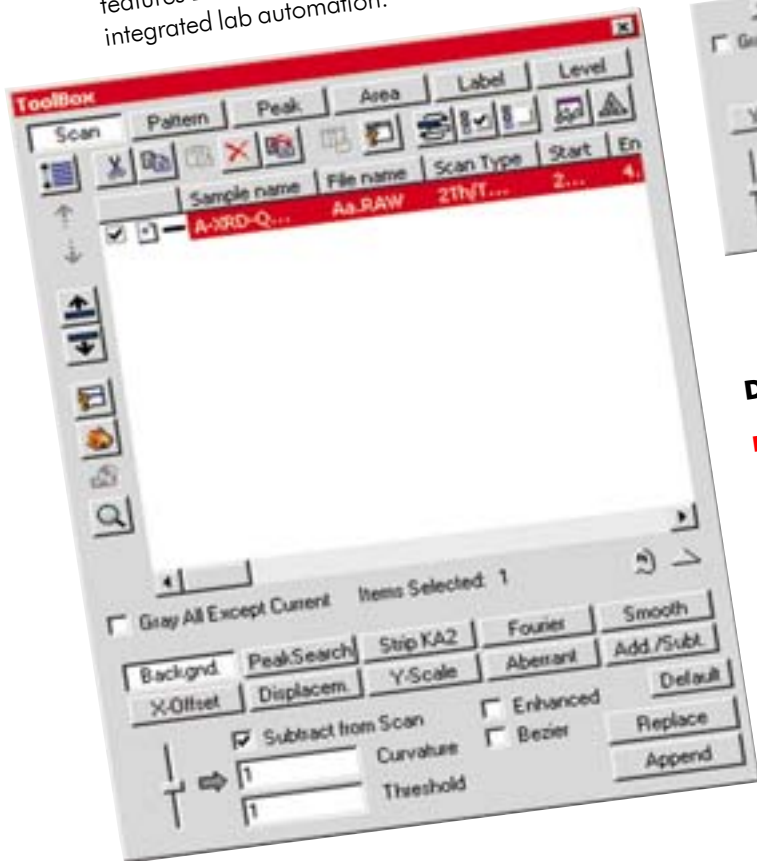
The full integration of EVA into the Windows environment provides direct links to database, graphics, word-processing, spreadsheet, and presentation software.

As a true 32-bit application EVA offers all the benefits of the Windows environment from fast point-and-click operation to real multitasking. Its straightforward and intuitive user interface with its extensive help system makes it easy to use from the very beginning.

Evaluation methods for all applications

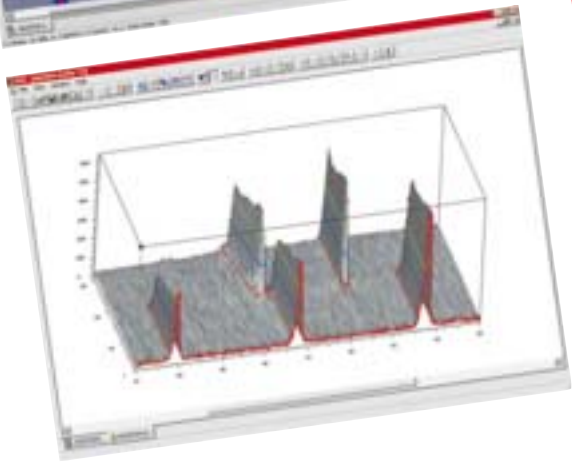
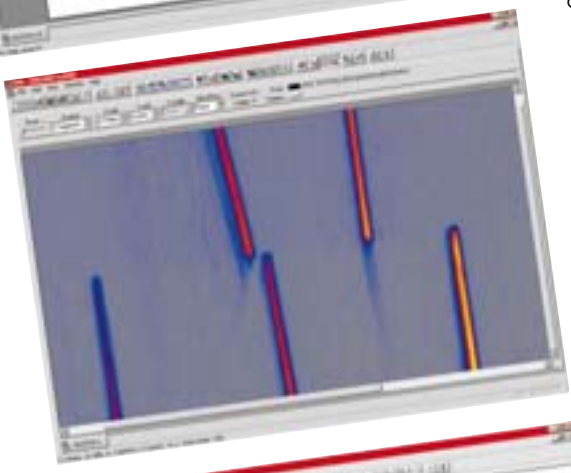
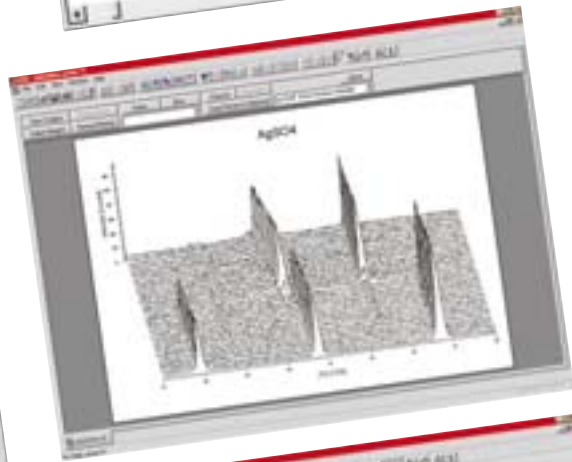
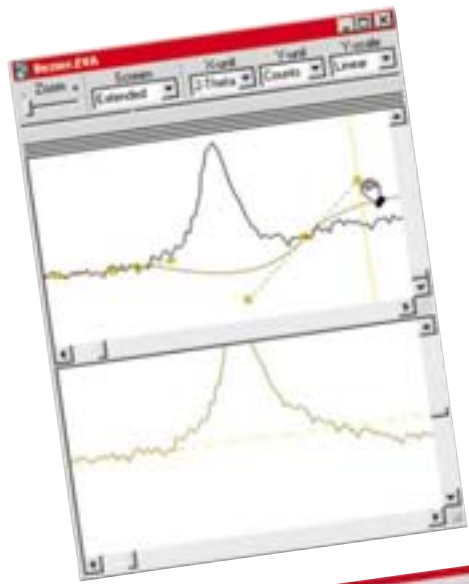
EVA provides a complete collection of the best algorithms for XRD data analysis. Full access to all function parameters is provided. EVA features a unique Real-Time-Preview of all evaluations using the "ghost"-function.

Automatic data evaluation and automatic printing of graphics and numerical results are integral parts of this powerful evaluation package for powder diffractometry. With these features EVA enables modern, completely integrated lab automation.



Data evaluation options:

- Accurate background determination (parabola fitting, Bezier curves) in combination with the unique extended view features
- Graphical adjustment of lattice parameters
- Semi-quantitative analysis
- Unlimited number of undo's and redo's
- Peak search (Savitzky-Golay method) and creation of d/l files
- $K\alpha_2$ -stripping (Rachinger method)
- Fourier analysis of data for smoothing as well as removal of intensity cut-off effects by data interpolation
- Conventional method
- 2θ -offset and corrections
- Selectable Y-axis
- Calculation of peak position, center half width
- Correction of peak position
- Addition of peaks



smoothing (Savitzky-Golay)
 sample displacement correc-
 -scaling and Y-offset
 of profile parameters such as line
 center of gravity, integrated area,
 and many more
 n of aberrant data
 and subtraction of patterns

User friendly, convenient and versatile

EVA is following a consistent and Windows-compliant philosophy of organizing selected measurement data, evaluation results, labels and much more within documents. In addition, every EVA document contains the complete history of all the operations performed.

You want to reverse an action? No problem! EVA allows an unlimited number of undo's and redo's! With documents you can save, load and resume your EVA sessions anytime at any stage.

This unique document strategy as well as the perfect integration of EVA into the Windows environment provides the user with all the advantages of a modern software technology: An intuitive, self explaining, fully Windows-compliant graphical user interface for perfect data presentation, easy data exchange and creation of professional printer outputs.

Data display options:

- Self explaining, fully customizable user interface
- Several documents can be displayed and treated simultaneously
- Optional segmenting of the screen display into main area, overall view, extended view, and magnifying glass. Free zooming in each segment
- Customizable 2D as well as 3D data presentation. Outstanding modules for true 3D graphics, waterfall plots as well as iso-intensity curves (contour plots) for 3D data
- Free selection of axis scalings, labels, colors, fonts and so on

Data exchange options:

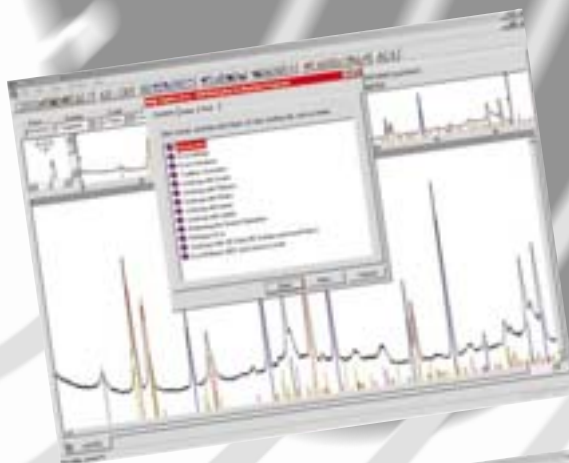
- Drag & Drop, Windows metafiles, DDE
- Easy exchange of graphics and numerical results within EVA documents
- Easy import and export of graphics and numerical results between EVA and any other Windows application

Print options:

- Extensive print preview with numerous treatment options
- Creation of high quality outputs for printing or exporting into other Windows application
- Definition of individual layouts by using fully customizable templates for the fastest evaluation outcome possible
- Perfect presentation in black/white for publications especially of complex multi-phase patterns
- Automatic printing options for fully automated data evaluation

Ease of getting started:

- Automated installation wizard
- Self-prompting user interface
- Extensive, context sensitive online help system
- Comprehensive manual with many tutorial sections



BRUKER AXS GMBH
OESTLICHE RHEINBRUECKENSTR. 49
D-76187 KARLSRUHE
GERMANY

TEL. (+49) (721) 595-2888
FAX (+49) (721) 595-4587
WWW www.bruker-axs.de
EMAIL info@bruker-axs.de

BRUKER AXS, INC.
5465 EAST CHERYL PARKWAY
MADISON, WI 53711-5373
USA

TEL. (+1) (800) 234-XRAY
TEL. (+1) (608) 276-3000
FAX (+1) (608) 276-3006
WWW www.bruker-axs.com
EMAIL info@bruker-axs.com