



ARTAX

● Portable μ -XRF Spectrometer



ARTAX – Elemental Analysis for the Art Community and More ...

The ARTAX is the first portable X-ray fluorescence (XRF) spectrometer designed to meet the specific requirements for non-destructive elemental analysis.

The ARTAX® Series

Non-destructive elemental analysis is mandatory for testing many kinds of samples. It is required for origin or age determination of unique and valuable art objects, for investigating objects that secure evidence in forensic sciences as well as for final testing of industrial products and for materials research. Especially when the amount of sample material is limited or material recovery is essential. Micro X-ray fluorescence analysis (μ -XRF) is the most suitable technology to fulfil the requirements. μ -XRF delivers the most detailed information possible on material composition and structure. Objects are not damaged or altered by μ -XRF analysis. The analysis can be done at the location of the object with a mobile spectrometer configuration. Bruker Nano offers a complete range of μ -XRF spectrometers. Different configurations are available to meet your application and budgetary needs.

The ARTAX is the first portable X-ray fluorescence (XRF) spectrometer designed to meet the specific requirements of non-destructive in-situ elemental analysis.

ARTAX is suitable for multielement analysis of Na(11) to U(92) and offers a spatial resolution down to 70 μ m. Fast, high-resolution elemental analysis is possible with ARTAX because of its innovative measuring head design. The ability to combine ARTAX options into a system uniquely tailored to your needs ensures maximum flexibility for a wide range of applications:

- Archeometry
- Restoration and conservation
- Process-related quality control
- Forensic sciences
- Research and development of advanced materials

Features and Benefits

Portable instrument design

Direct, on the spot examination of valuable or stationary objects

Compact, open system

Enables the examination of large and uneven objects. No sample preparation required

Polycapillary lens for beam focusing

Highest spatial resolution possible. Extremely high fluorescence intensity reduces measurement time

XFlash® silicon drift detector (SDD)

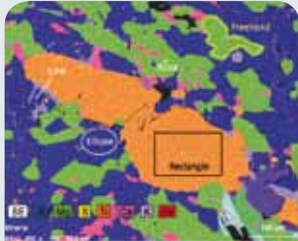
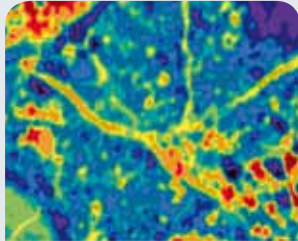

Liquid nitrogen as cooling agent not required. High count rate results in short measurement times

Helium purging

Direct measurement of light elements from Na(11) to Ar(18). Avoids vacuum, which might damage fragile samples

X-Y-Z stage

Reproducible positioning of the measuring head

	X-Ray Microanalysis (EDS)	Micro X-ray Fluorescence Analysis (μ-XRF)	X-Ray Fluorescence Analysis (XRF)
Capability	High resolution element mapping in the sub- μ m range	Non-destructive spatial investigation of element distribution	Elemental analysis of bulk samples
Limitation	Destructive sample preparation required	Analytical range of 10 μ m to 10 mm	No information about spatial element distribution
	nm – μm	μm – mm	mm – cm
			

The Heart of ARTAX – the Measuring Head



The ARTAX is equipped with a measuring head

featuring the most advanced technology for precise and fast data acquisition. Outstanding components include the XFlash® SDD and an innovative exchangeable excitation source.

The polycapillary lens

of the ARTAX creates a microspot (< 100 µm) of primary X-radiation with high intensity, using a polycapillary lens. Polycapillary lenses are an ensemble of several thousand glass capillaries which form a united monolithic structure. In comparison to a pinhole collimator, the fluorescence intensity of a polycapillary lens is increased by a factor of more than 1000.

The XFlash® energy-dispersive detector

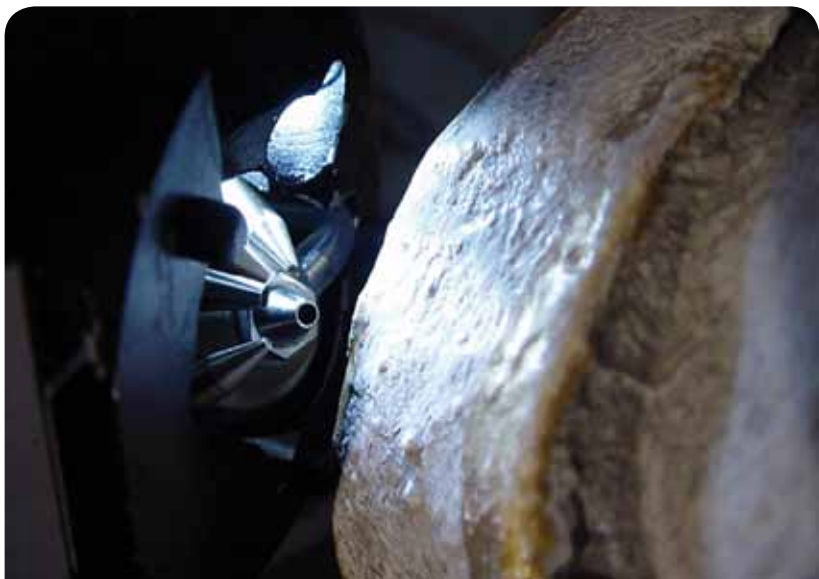
analyses the X-ray fluorescence. This Peltier cooled silicon drift detector operates nitrogen-free with high-speed, low-noise electronics. It has significantly better energy resolution and higher count rate capability than PIN diode detectors. This allows fast measurement during line scans and element mapping.

The integrated CCD camera

shows a magnified image of the sample region under investigation. A white LED illuminates the sample to optimize the image quality and contrast. Pictures are automatically stored for documentation purposes.



	PIN diode	XFlash®
% dead time		
at 2,500 cps	> 20 %	< 0.5 %
at 25,000 cps	> 75 %	< 6 %
Energy resolution		
	> 200 eV	< 159 eV



Change Your Excitation Source – It's As Simple As That!

The excitation source

is fitted with a high precision lock, which allows the fast exchange of the X-ray tube housing. This enables you to choose the most suitable excitation and quickly exchange the X-ray optics. Including warm-up, the switch of the tube can be done in less than 15 minutes.

Mo or W? Both! An X-ray tube with a W target generates 2 to 5 times larger peak areas for K-line elements above 20 keV (e.g. Ag, Sn, Sb) than a tube with a Mo target. In contrast, the Mo tube has the major advantage of significantly better light element detection. The ARTAX allows the fast and easy application of both W and Mo X-ray target materials for advanced analysis of any kind of sample.



The exact position of the beam on the sample

and the exact distance between object and spectrometer is controlled via a laser diode. The laser spot is adjusted to the focus of the mini lens and is visualised by the camera.

The movement of the measuring head is controlled by a X-Y-Z stage, which is suitable for fast line scans and element mapping. Powerful software creates area images of the element distribution across the sample.

The open design of the spectrometer head together with a distance of about 10 mm to the sample allows the analysis of all kinds of surfaces including uneven and structured ones.



Easy integration of additional warning lamps, door interlocks, etc.
Integrated flow controller for the He purge control and "empty bottle" alarm

Successful in Art, Forensics and Industry

Altarpiece with metal leaf applications

Thin layers of gold and silver approximately $1\ \mu\text{m}$ thick were investigated by single point measurements with a W target tube and 0.65 mm collimator. The W target guaranteed high sensitivity for silver traces. Layers of pure silver, $23\frac{1}{2}$ carat "Rosenobelgold" and historical gold alloys like green gold (30% Cu) and "Zwischgold" (Ag and Au layers hammered together) were characterized.



Göttingen Barfüßer altarpiece (1424)



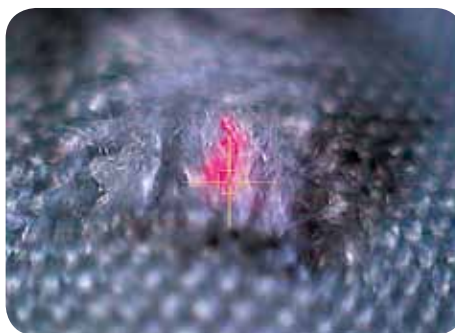
Iron gall inks in manuscripts

Thin ink layers on paper are very inhomogeneous and do not allow reproducible point measurements. Therefore, line scans of 10 measurements each were acquired and subsequently accumulated for calculation of the average element content. The excitation through the Mo tube and polycapillary lens allowed the analysis of fine ink strokes. The amounts of trace elements like Zn, Cu and Mn were calculated, leading to an origin and chronological classification of the work.

Johann
Sebastian
Bach
Serenade

Fabric with particles attached after gun shot

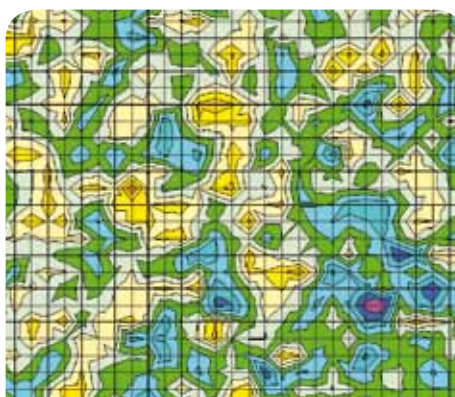
2D mapping of a $2 \times 2.5\ \text{mm}$ fabric (20×25 measurements, $100\ \mu\text{m}$ step-width, 5 s per point) with Mo tube and polycapillary lens. Identification of particles down to $10\ \mu\text{m}$ in size. Particle distribution across the fabric allowed the exact determination of the incidence angle of the gun shot.



Fabric with gun shot residue

A polymer mould with fine structures formed by Cr, Cu and Fe

2D mapping of a $3 \times 3\ \text{mm}$ area (30×30 measurements, $100\ \mu\text{m}$ step-width, 3 s per point) with Mo tube and polycapillary lens. The distribution of the key elements was measured, leading to the determination of relative concentrations across the sample.



Chromium distribution in a polymer mould

Three Solutions – No Analytical Compromise

The outstanding performance of the ARTAX

is based on the design of the measuring head and the integration of the most modern components. The same measuring head is included in all ARTAX systems. This guarantees the highest data quality – without compromise.

- Exchangeable excitation source with air-cooled X-ray tube
- Liquid nitrogen-free XFlash® silicon drift detector, 159 eV resolution
- Integrated CCD camera with sample illumination and laser spot
- Compact control unit including high voltage generator
- ARTAXControl for semi-quantitative XRF analysis

Users have different requirements regarding their μ -XRF spectrometer: the number of samples to be analyzed, the analytical procedure, the need for mobility and financial resources. Consequentially Bruker Nano offers three ARTAX configurations, each fully upgradable.

ARTAX configurations

- ARTAX 200 – Small labs with a limited number of samples, independent conservators, high need for mobility
- ARTAX 400 – Labs with intermediate demands, need for 2D element distributions
- ARTAX 800 – Labs with highest demands, numerous samples, fast sample throughput

The ability to customize your ARTAX as needed ensures that it will meet your requirements now and in future.

Accessories for the ARTAX systems

- Second excitation source, tube housing, X-ray tube, collimator or polycapillary lens
- Additional filter assembly for improving the signal to noise ratio
- Collimator set: 0.2 mm, 1.0 mm, 1.5 mm
- Acrylic glass shielding for protection against scattered X-rays



Nondestructive analysis of the composition of enamel applications of the Dreikönigsschrein (Three Magi Shrine), Cologne Cathedral. Analyses were performed in October 2007 by the Rathgen Research Laboratory, National Museums of Berlin in collaboration with the cathedral chapter of Cologne and the support of Bruker Nano GmbH.

The photographs were made available by kind permission of Gemäldegalerie Alte Meister Dresden (Piero di Cosimo, "The Holy Family", page 2), Landesmuseum Hannover (Göttinger Barfüßer altarpiece, page 6), Rathgen Forschungslabor, Staatliche Museen zu Berlin (Three Magi Shrine of the Cologne Cathedral, page 7).

Technical Specifications



ARTAX systems	200	400	800
Basic system			
Compact control unit with high voltage generator, 50 kV, 50 W	✓	✓	✓
Option for light element detection starting from Na Helium purging of the excitation and detection paths	optional	✓	✓
Measuring head			
Color CCD camera, 500 x 582 pixels, ca. 20 times magnification Dimmable white LED for sample illumination Laser spot for reproducible positioning of the measuring head	✓	✓	✓
Detector			
Peltier cooled XFlash® silicon drift detector, 10 mm ² active area Energy resolution <150 eV for Mn-K α at 100 kcps Max. count rate >100 kcps, dead time <10 % at 40 kcps	✓	✓	✓
Exchangeable excitation source			
X-ray tube housing with precision lock for simple exchange Incl. electro-mechanical shutter, two absorption filters	✓	✓	✓
Air-cooled Mo X-ray fine focus tube*, max. 50 kV, 1 mA, 40 W Exchangeable collimator, 650 μ m	✓	✓	—
Air-cooled Mo X-ray fine focus tube*, max. 50 kV, 1 mA, 30 W Polycapillary lens for micro excitation spot (intensity gain >1000) Lateral resolution <100 μ m, for excitation up to Sb K-line	—	—	✓
Mounting			
Tripod for free positioning of the system, incl. rolling skates Free rotatable arm and variable height adjustment (500–1500 mm)	—	✓	✓
X-Y-Z stage with stepper motors, 50 mm range ARTAX 1D and 2D mapping software	—	✓	✓
Light-weight tripod, optimally suited for mobile use	✓	optional	optional
Software			
ARTAXControl semi-quantitative XRF software for hardware control and data evaluation	✓	✓	✓
ARTAXQuant standards-based software	optional	optional	optional
Notebook computer	✓	✓	✓

* W, Rh, Cu and Cr tubes available on request

● **Bruker Nano GmbH**
Berlin · Germany
Phone +49 (30) 670990-0
Fax +49 (30) 670990-30
info@bruker-nano.de

Bruker AXS GmbH
Karlsruhe · Germany
Phone +49 (7 21) 5 95-28 88
Fax +49 (7 21) 5 95-45 87
info@bruker-axs.de

Bruker AXS Inc.
Madison, WI · USA
Phone +1 (608) 276-3000
Fax +1 (608) 276-3006
info@bruker-axs.com

www.bruker.com